

LARGE CAN TYPE

HP

Series

Snap-in Terminal, Wide Temperature Range

JAMICON®

- Three kinds of terminal are available for your use.
- High temperature 105°C, high ripple current and high reliability.

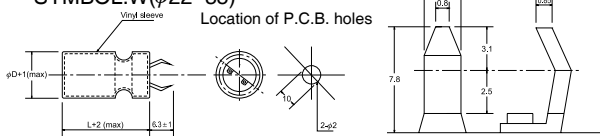


● SPECIFICATION

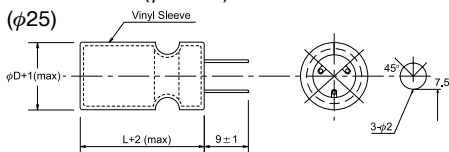
| Item | Characteristic | | | | | | | | | | | |
|---|--|-----------------------------------|------|------|------|------|--------------|------|------|------|------|------|
| Operation Temperature Range | -40 ~ +105°C | | | | | | -25 ~ +105°C | | | | | |
| Rated Working Voltage | 16 ~ 100VDC | | | | | | 160 ~ 400VDC | | | | | |
| Capacitance Tolerance (120Hz 20°C) | ±20%(M) | | | | | | | | | | | |
| Leakage Current (20°C) | $I \leq 0.02CV$ or 3 (mA) *Whichever is smaller after 5 minutes I : Leakage Current(μA) C : Rated Capacitance(μF) V : Working Voltage(V) | | | | | | | | | | | |
| Surge Voltage (20°C) | W.V. | 16 | 25 | 35 | 50 | 63 | 100 | 160 | 200 | 250 | 350 | 400 |
| | S.V. | 20 | 32 | 44 | 63 | 79 | 125 | 200 | 250 | 300 | 400 | 450 |
| Dissipation Factor (tan δ) (120Hz 20°C) | W.V. | 16 | 25 | 35 | 50 | 63 | 100 | 160 | 200 | 250 | 350 | 400 |
| | tan δ | 0.45 | 0.35 | 0.30 | 0.25 | 0.25 | 0.20 | 0.15 | 0.15 | 0.15 | 0.20 | 0.20 |
| Low Temperature Stability | Impedance ratio at 120Hz | | | | | | | | | | | |
| | Rated Voltage (V) | 16 | 25 | 35 | 50 | 63 | 100 | 160 | 250 | 350 | 400 | |
| | -25°C / +20°C | 6 | 6 | 6 | 4 | 3 | 4 | 6 | | | | |
| | -40°C / +20°C | 15 | 15 | 10 | 8 | 6 | — | — | | | | |
| Load Life | After 2000 hours application of W.V. and +105°C ripple current value, the capacitor shall meet the following limits. (DC + ripple peak voltage ≦ rate working voltage) | | | | | | | | | | | |
| | Capacitance Change | ≦ ±20% of initial value | | | | | | | | | | |
| | Dissipation Factor | ≦ 200% of initial specified value | | | | | | | | | | |
| | Leakage current | ≦ initial specified value | | | | | | | | | | |
| Shelf Life | At +105°C no voltage application after 1000 hours, the capacitor shall meet the limits for load life characteristics. (with voltage treatment) | | | | | | | | | | | |

● TERMINAL TYPE

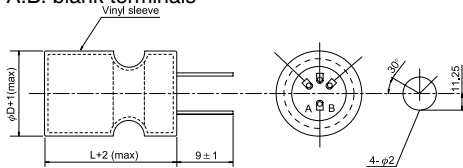
▲ P.C.B. TERMINAL (SNAP IN) SYMBOL:W(φ22~35)



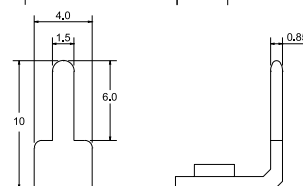
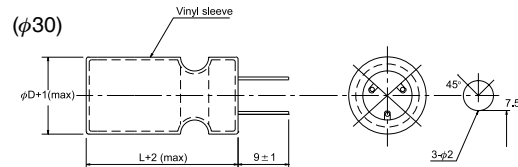
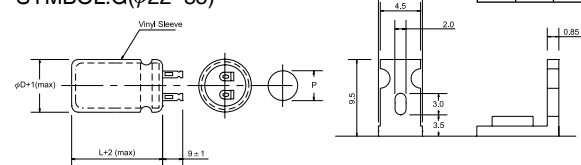
▲ P.C.B. TERMINAL SYMBOL:V(φ25~35)



(φ35) A.B. blank terminals



▲ LUG TERMINAL SYMBOL:G(φ22~35)



| | | | | |
|----|----|----|----|----|
| φD | 22 | 25 | 30 | 35 |
| P | 8 | 10 | 10 | 14 |

● RIPPLE CURRENT COEFFICIENTS

| Temperature(°C) | 45 | 60 | 85 | 105 |
|-----------------|------|------|------|------|
| Multiplier | 2.55 | 2.25 | 1.65 | 1.00 |

| Frequency(Hz) | 60 | 120 | 300 | 1k | 10k | 100k |
|---------------|------------|------|------|------|------|------|
| W.V. | Multiplier | | | | | |
| 16~50V | 0.90 | 1.00 | 1.03 | 1.05 | 1.10 | 1.10 |
| 63~100V | 0.85 | 1.00 | 1.07 | 1.13 | 1.19 | 1.20 |
| 160~400V | 0.80 | 1.00 | 1.15 | 1.25 | 1.35 | 1.40 |

